



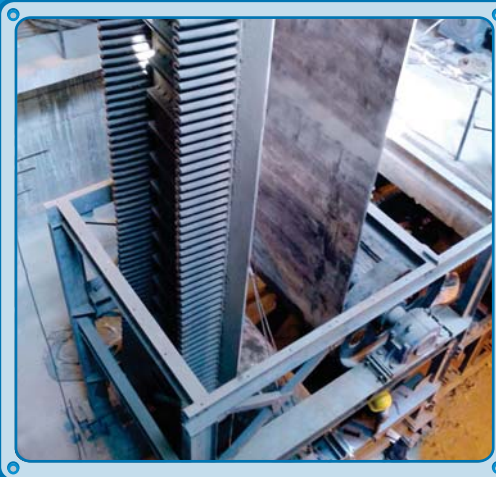
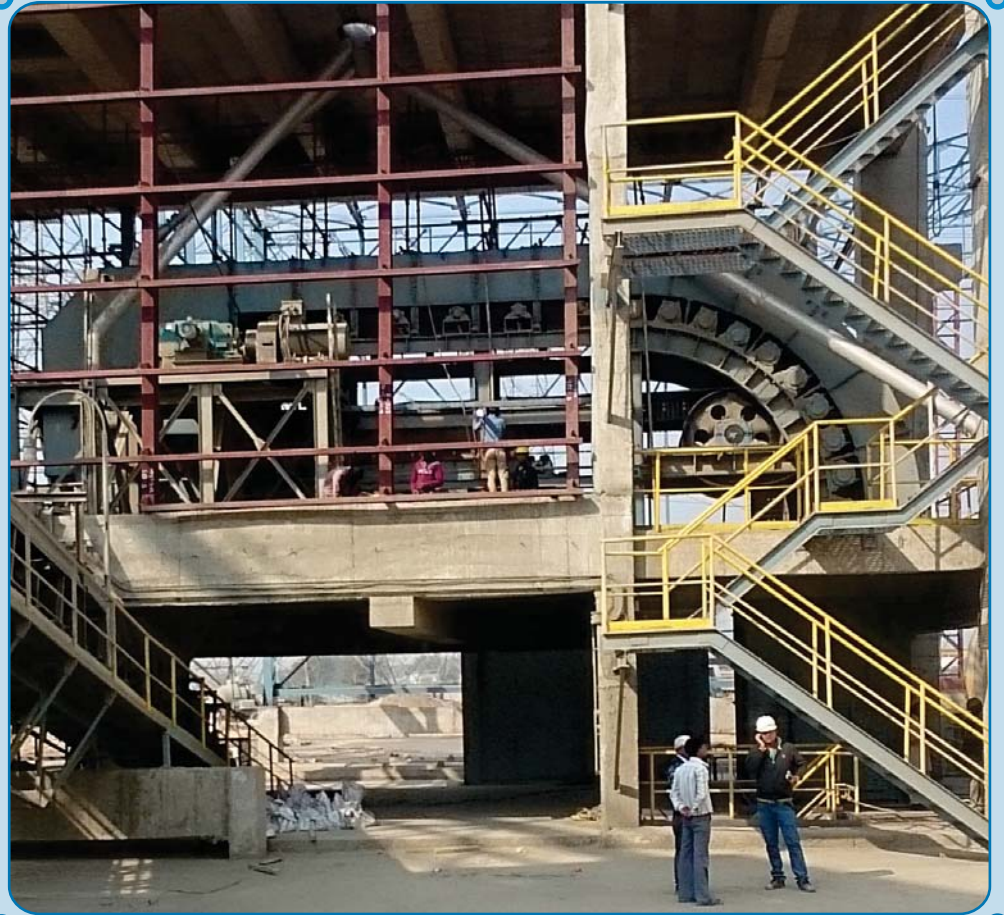
# BEVCON PRESENCE MADE DIFFERENCE TO INDIAN CEMENT SECTOR

Bevcon involved from concept to commissioning and successfully commissioned "1650TPH Steep Angle (90°) Sidewall Belt Conveyor for clinker conveying at JK Cement plant" in 2014. This unique concept replaces age old traditional use of deep pan / bucket elevators / belt conveyors for conveying material from wagon tippler to ball mill.

Bevcon core competency and dream of bringing Innovative technology's to Indian material handling sector has proven once again in reality.

## Salient features of SAC for conveying clinker from wagon tippler to ball mill:

- > Most space optimized layout - reduces under ground tunnel length by 70 - 80%
- > Very low power consumption per ton of material conveyed
- > Very low capital investment incomparison with conventional systems in place
- > Environmentally friendly system
- > Very low project execution timeline
- > Low operation cost (life cycle cost analysis)
- > Highly reliable for 24X7 operation



Bevcon successfully commissioned steep angle (90°) cleated belt conveyor profiles for various material handling applications.

## RAW MATERIAL HANDLING SYSTEMS



Limestone, Clinker Clay, Dolomite, Bauxite & Laterite Handling System at JK Cement



Limestone & Clinker Handling System at Reliance Cement



Coal & Limestone Handling System at Wonder Cement